

Before Using The DSS-5000 SUB

- Completely read this Quick Start Guide and become familiar with the analyzer components.
- Fully charge the analyzer before using.

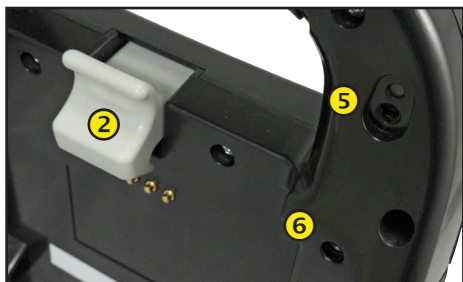


IMPORTANT: For additional support go to www.subaruretailersolutions.com or call 1.866.213.4690, 8:00 am to 6:00 pm EST, Monday through Friday

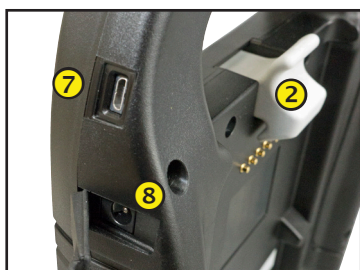
Controller



- 1 Carrying Handle:** For carrying the Controller and Tester Pod (when attached).
- 2 Controller Release Lever:** Press to release the Controller from the Tester Pod.
- 3 Power Button:** Hold for 2 seconds to turn the Controller on and off independent of the Tester Pod. Flashes when the Controller is being charged.
- 4 Touch Screen:** Primary user interface.



- 5 Camera & Flashlight:** For VIN scanning and identification.
- 6 Temperature Sensor:** For measuring battery temperature.



- 7 Micro-USB Port:** For updating and servicing the Controller when a WiFi network is not available.
- 8 Power Supply Connection**

Tester Pod



- 1 Controller Charging Contacts:** For charging and communicating with the Controller when mounted to the Tester Pod.
- 2 Status Indicator LEDs:**
 - Power is on
 - Clamps reversed
 - Tester Pod is communicating with the Controller
- 3 Clamp Storage Mounts:** Use to keep the test clamps protected when the tester is not in use.
- 4 Tester Pod Internal Batteries**

Charging Dock



- 1 Tester Pod Charging Contacts:** For charging the Tester Pod
- 2 Power Supply Connection**

Initial Power Up

1. Upon initial power-up, the Language Settings screen is displayed. Tap **Next** to continue.

System Language	Select the Controller default language displayed on the screen.
Test Result Language	Select the Controller default language for all displayed tests and test results.
Email Language	Select the default standard language for the analyzer to use for all tests and results sent via email.
Print Language	Select the default standard language for the analyzer to use for all tests and results printed using a networked printer.

2. A Consent to collect data screen is displayed. Tap the Consent check box and then tap **Next** to continue.
3. Using the displayed keypad template, enter the new user name and password.
4. Tap **Next** to continue.



IMPORTANT: By default, the first user created is assigned Administrator rights. Tap Add User to add additional users. See Chapter 9: Settings to change these defaults.

5. The Date/Time Settings are displayed. Tap **Next** to continue after making any adjustments.

Select Time Format:	12-hour or 24-hour format
Select Date Format:	DD/MM/YYYY, MM/DD/YYYY, or YYYY/MM/DD
Select Time Zone:	Time zone offset from Greenwich Mean Time
Set Date:	Set the current date
Set Time:	Set the current time in the selected time zone

6. The Test Settings are displayed. Tap **Next** to continue after making any adjustments.

Battery Rating	Default: CCA (Cold Cranking Amps)
Temperature Units	Select Fahrenheit or Celsius
Decimal Separator	Select decimal point or comma

7. The Configured WiFi Networks screen is displayed. By default "subtronics01" is displayed. Tap **Next** to continue.



NOTE: If available, the DSS-5000 SUB will automatically connect to the subtronics01 WiFi network installed at each dealer during initial set-up. This network is for use by Midtronics tools.

SSID = "subtronics01"
 Password = "m1dtr0n1c\$"

WPA2 security



IMPORTANT: The "subtronics01" network is only available to U.S. dealers.

8. Select the country in which the tool will be used (U.S. or Canada).
9. The BMIS (Battery Management Information System) Account screen is displayed. If the tool has already connected to "subtronics01", the Username and Password is displayed.

If the username and password are not displayed, enter the correct username and password from the following table.

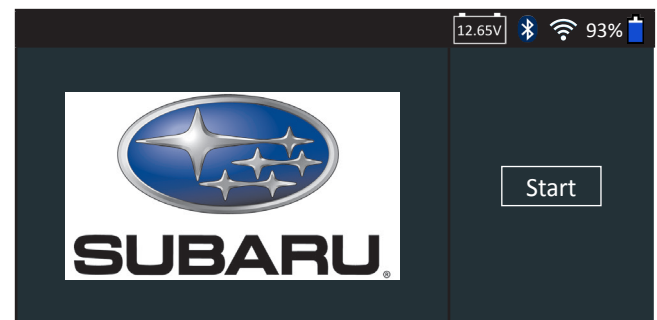
Country	Username	Password
U.S. Dealers	subaru@dss5000.com	subaru1
Canadian Dealers	subarucanada@dss5000.com	subaru1

Press → to continue.



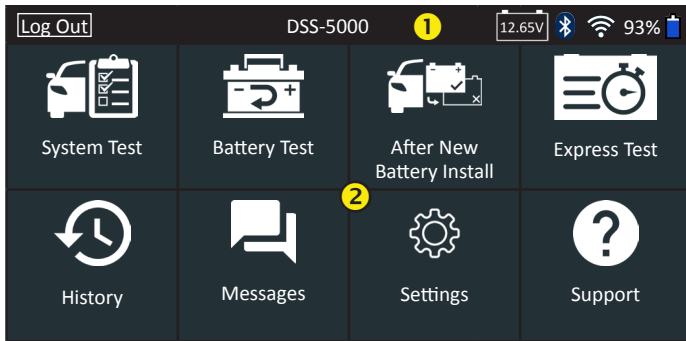
IMPORTANT: If no WiFi connection has been made, follow the procedure described in the WiFi section of Chapter 8: Settings.

10. The Location Selection screen (Admin Only) is displayed. Scroll to find the correct location or tap Q to search for a specific location. Tap **Next** to continue.
11. The login screen is displayed.



12. Tap **Start** to access the Main Menu.

Main Menu



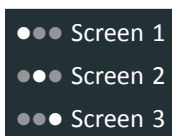
1 Menu Bar

Log Out	Log out current user	93%	Controller internal battery level
	Bluetooth connectivity status		Controller internal battery status
	WiFi signal strength		Connected battery voltage

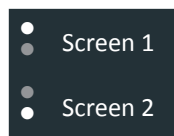
2 Main Menu Selection Area

Additional Screens

The dots at the bottom or side of a menu or results screen indicate additional screens are available. Use your finger to swipe horizontally left, right, up or down across the Controller screen to view all of the results.



Swipe
Horizontally



Swipe
Vertically

Main Menu Icons

Icon	Description
In Vehicle Test	Automates battery testing for quickly testing vehicles using the fewest steps. A VIN is required and a Warranty Code is generated for all Replace Battery decisions.
Out of Vehicle Test	For testing out-of-vehicle customer batteries for possible return.
After New Battery Install	For testing newly installed batteries in a vehicle. Also includes vehicle electronics reset information after battery installation.
Express Test	For quickly testing batteries in vehicles in for servicing. A VIN is optional and a Warranty Code is generated for all Replace Battery decisions.
History	Access archived test histories or search test history by VIN or by technician.
Messages	Displays alerts and notifications for upcoming tests and activities including scheduled tests, tool software updates and maintenance opportunities.
Settings	Setup/adjust: WiFi, printer setup, email settings, user information, default language, display and sound settings, BMIS information, shop information, and connected devices. Also access to tester software version information.
Support	Access the analyzer Self-Test and a digitized version of the Instruction Manual.

Recommended Test Procedure

The DSS-5000 testing process uses Conductance Profiling™ technology which determines battery cranking capability and also adds Reserve Capacity testing. With this additional process, initial battery analysis can take up to 60 seconds to complete.



IMPORTANT: Always begin each test by connecting the Tester Pod clamps to the battery being tested. The testing process begins as soon as the clamps are connected.

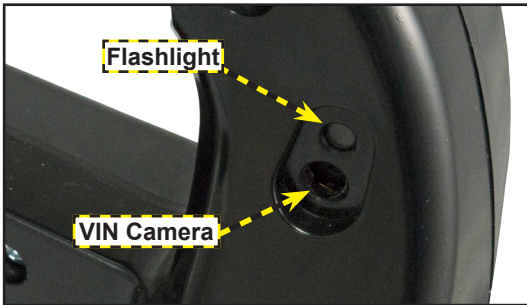
The DSS-5000 provides a battery decision along with additional detailed information on battery cranking and reserve capacity. Swipe the screen horizontally to the right or left to view the additional results screens.

VIN Scanning

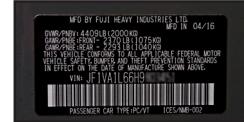
The DSS-5000 uses a camera built into the Controller handle to scan the VIN of the vehicle being tested. This number is then cross referenced with the original equipment manufacturer's battery specifications stored in the tester's database and displayed on the Controller screen.

Scanning Tips

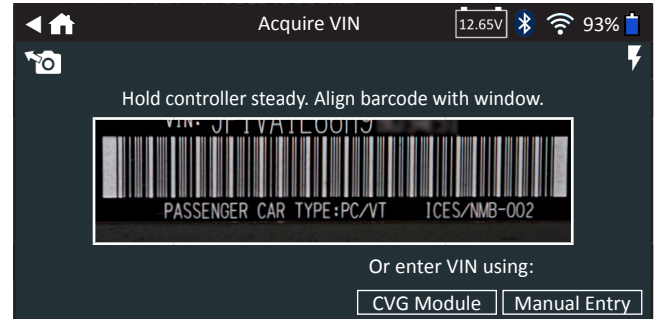
- **Camera:** Located in the upper left portion on the back of the Controller handle.



- **Hold Steady:** Hold Controller steady when scanning the VIN barcode. This allows the user to clearly see the barcode and allows the camera to focus on it.



Drivers Door Frame



- **Fill Viewfinder:** Make sure the entire barcode is visible. Keeping the entire VIN barcode visible while slowly moving the camera closer or further away will help capture.
- **Clean Barcode/Window:** Surface dirt can interfere with the scanning process. If necessary wipe the VIN barcode with a cloth or your finger remove any surface dirt.
- **Lighting/Glare:** To provide additional light in low-light situations, tap the ⚡ icon to turn on the built-in flashlight.

If the flashlight, or sunlight, is shining directly onto the VIN barcode, try pivoting the camera up or down slightly to reduce any glare.



www.midtronics.com

Corporate Headquarters
Willowbrook, IL USA
Phone: 1.630.323.2800
Canadian Inquiries
Toll Free: +1 1 866 592 8052

Midtronics b.v.
European Headquarters
Houten, The Netherlands
Serving Europe, Africa, the Middle East, and The Netherlands
Phone: +31 306 868 150

Midtronics China
China Operations
Shenzhen, China
Phone: +86 755 2374 1010

Midtronics India
Navi Mumbai, India
Phone: +91 22 2756 4103/1513
Asia/Pacific (excluding China)
Contact Corporate Headquarters
Phone: +1.630.323.2800